

# Bella Citta®



## 7 Series **PLUS** with Acrylic Urethane

Crafted from Old World European Designs

**Antiqued Hardwood Flooring**





Crafted from Old World European Designs

## Antiqued Hardwood Flooring

# 7 Series **PLUS** with Acrylic Urethane



Introducing a reinvented classic. Bella Citta's 7 Series PLUS further defines the luxury wood floor category with advancements in harvesting, coloring, consistency, and technology. Harvested only from certified French forests, 7 Plus's French Oak offers features that generically labeled "European Oak" simply cannot provide. A 300 year history of stringent harvesting leads to a consistent supply of lumber allowing this new pallet of complex colors to be duplicated time and time again. Advancements in finish technology offer an extreme matte, real wood feel without the need to ever oil the floor.



WHITE WASH FRENCH OAK



ASPEN FRENCH OAK



DRIFTWOOD FRENCH OAK



WHISKEY FRENCH OAK



NANTUCKET FRENCH OAK



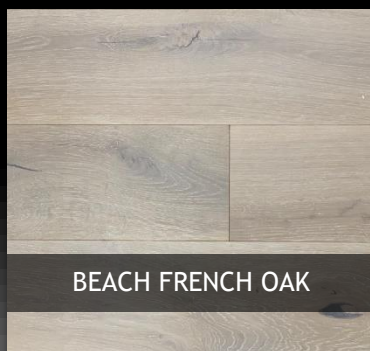
SILVER LINING FRENCH OAK



GRAPHITE FRENCH OAK



BARLEY FRENCH OAK



BEACH FRENCH OAK



BOURBON FRENCH OAK



AMERICAN WALNUT

### About Photo

Product photos and website images are to offer an impression and examples of the appearance of the floor. The color, grain and character variations shown may vary from actual flooring due to the limitations in the reproduction of photography or the monitor resolutions.





# 7 Series PLUS

## CERTIFIED FRENCH OAK

- 300 year history of sustainable forest management and harvested only from certified French forests.
- Harvested only at full maturity after 150+ years producing a tighter, less porous grain structure. This results in a denser lumber with increased durability and stability.
- French Oak has less color variation and the highest content of any other oak around the globe. This allows for not only different tones and colors that cannot be found in other oak, but a consistency in color and grading year after year.

## EUROPEAN STYLING

- Wide and Long planks.
- Earthy base colors that allow the floor to be the backdrop of any home design style
- Unique coloring process including reactive treatments, fuming and lime washing react with the wood to produce colors while keeping the wood's natural character and grain.
- Eternal color pallets that last through all trends and never go out of style.
- The addition of an American classic, Walnut, offers a rich brown with subtle grain that is unequalled in any specie.
- Extreme Matte Urethane Finish enhances the wood grain. The look of an oil finish without the maintenance. No Oiling Required!

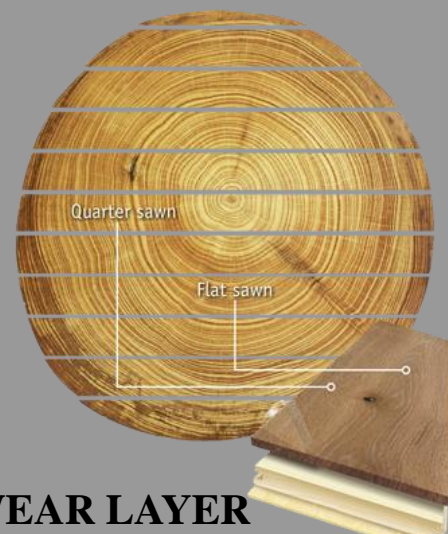
## WARRANTY

- Lifetime Structural Warranty
- 50 year Residential Surface Warranty
- 5 year Light Commercial Surface Warranty



## HIGH QUALITY & HIGH VALUE

- Crafted with precision Italian machinery.
- Cold press lamination takes longer to cure but results in more durable, stable planks.
- Features a strong 3-ply cross-grain construction. This design resists shrinkage, expansion and warping from seasonal changes. A hardwood core enhances stability.
- A 4mm wear layer can be re-sanded up to three times.
- Radiant heat compatible (up to 83° F).



## LIVE SAWN

### SOLID TOP WEAR LAYER

- Logs are “live-sawn”. By cutting straight through the log, you get a high percentage of spectacular and stable quartersawn sections with medullar flecks and cathedral grain all in the same plank. Wide live-sawn planks show the various idiosyncrasies of each log, including knots, pith or mineral deposits.
- 4mm top layer is comparable to solid wood and can be sanded up to three times.





# 7 Series PLUS

## ENVIRONMENTAL CHOICE

### ENVIRONMENTALLY AND SOCIALLY RESPONSIBLE SOURCES

- Grown in forests that has been a model for sustainable hardwood management for the last 300 year. Trees cannot be cut unless new ones are re-planted.
- Harvested only from certified French forests.
- Harvested only at full maturity after 150+ years.
- Lacey Act Compliant.
- VLO : Verified managed-growth forest.
- PEFC Certified: The world's leading forest certification organization

### HEALTHY PRODUCT COMMITMENT

- CARB II compliant.
  - Actually 75% better than CARBII standard
- EO certified (European Standard stricter than CARB).
- No Urea formaldehyde.
- No VOCs.



### CONTRIBUTES TO LEED CREDITS

Relevant LEED Credits

Following are the LEED Credits\* for which Great Northern Flooring products can help earn points.

\* LEED-NC v2009

- Indoor Environmental Quality (IEQ)

IEQ 4.1 (Low Emitting Materials: Adhesives and Sealants)

To achieve a point under IEQ 4.1, among other requirements, "...all adhesives and sealants used on the interior of the building...shall comply with ...the South Coast Air Quality Management District Rule # 1168" which limits VOCs for Wood Flooring Adhesives at 100 g/L.

- IEQ 4.4 (Low Emitting Materials: Composite Wood and Agrifiber Products)

To achieve a point under IEQ 4.4, "...composite wood and agrifiber products used on the interior of the building (defined as inside of the weatherproofing system) shall contain no added urea-formaldehyde resins..." Under EQ 4.4, composite wood and agrifiber products are defined as particleboard, medium density fiberboard (MDF), plywood, wheatboard, strawboard, engineered wood flooring, panel substrates and door cores.



# 7 Series **PLUS** with Acrylic Urethane



## PRODUCT SPECIFICATION & PARTS LIST

LUD 101620

Board Dimension	5/8" x 7-1/2" x RL UPTO 82-5/8"
Board Length	Random Lengths upto 82-5/8"
Top Wear Layer	5/32" (4 mm) - Live Sawn Solid Top Wear Layer
Construction	1 Strip Wide Plank, 3-ply Engineered with spruce middle layer. Tongue & groove, end-matched. CARB 2 Certified Plywood Core = emissions<.05ppm.
Finish	Acrylic Urethane UV Cured Finish. 100% solids, free of any solvents or heavy metals, Non off-gassing .
Use	Residential, Commercial (light to medium traffic).
Installation	Glue down, Nail/Staple down, Floating. Can be installed on, above and below grade. Radiant heat compatible. Refer to the Bella Citta Installation Guide for detailed installation instructions.
Package	25.85 Sq.ft. / Carton
Quantity / Pallet	55 Cartons / Pallet, 1,421.75 Sq.ft. / Pallet
Weight	60 Lbs / Carton
Carton Dimension	3.5" x 8" x 82.5"
Moisture Content on Delivery	9 - 13%
Warranty	50 Year Limited Finish Warranty and Lifetime Limited Structural Integrity Warranty. 5 Year Commercial Finish Warranty. See Bella Citta Warranty guide at <a href="http://www.bellacittafloors.com">www.bellacittafloors.com</a> for specific details.
Maintenance	Vacuum regularly to keep surface clean from foreign objects. No Oiling needed. See Bella Citta Maintenance guide at <a href="http://www.bellacittafloors.com">www.bellacittafloors.com</a> for specific details.

Pattern	Product Code	Species	Grade	Treatments and Features
WHITE WASH FRENCH OAK	CDM BC07 WHITEWASH	French Oak	Classic	Lightly brushed, Lime washed
ASPEN FRENCH OAK	CDM BC07 ASPEN	French Oak	Classic	Lightly brushed, Lime washed, White stain
DRIFTWOOD FRENCH OAK	CDM BC07 DRIFTWOOD	French Oak	Country	Lightly brushed, Smoked, Bleach, Grey lime
WHISKEY FRENCH OAK	CDM BC07 WHISKEY	French Oak	Country	Lightly brushed, Smoked, Lime washed
NANTUCKET FRENCH OAK	CDM BC07 NANTUCKET	French Oak	Country	Lightly brushed, Smoked, Grey lime
SILVER LINING FRENCH OAK	CDM BC07 SILVERLING	French Oak	Country	Lightly brushed, Smoked, Grey lime, Reactive stain
BARLEY FRENCH OAK	CDM BC07 BARLEY	French Oak	Country	Lightly brushed, Smoked, Bleach, Lime washed
BEACH FRENCH OAK	CDM BC07 BEACH	French Oak	Country	Lightly brushed, Smoked, Bleach, Lime washed
BOURBON FRENCH OAK	CDM BC07 BOURBON	French Oak	Country	Lightly brushed, Smoked, Bleach, Lime washed
AMERICAN WALNUT	CDM BC07 AMRWALNUT	American Walnut	Country	Smooth, Natural

\* "Classic" grade may contain filled knots up to 3/4" but no mineral marks.

\* "Country" grade may contain filled knots up to 1-1/2" & mineral marks and sap wood up to 1" width.